



GMT MONTHLY MEMBERSHIP PROGRESS REPORT

Results as of: 4/30/2025

Multiple District 11

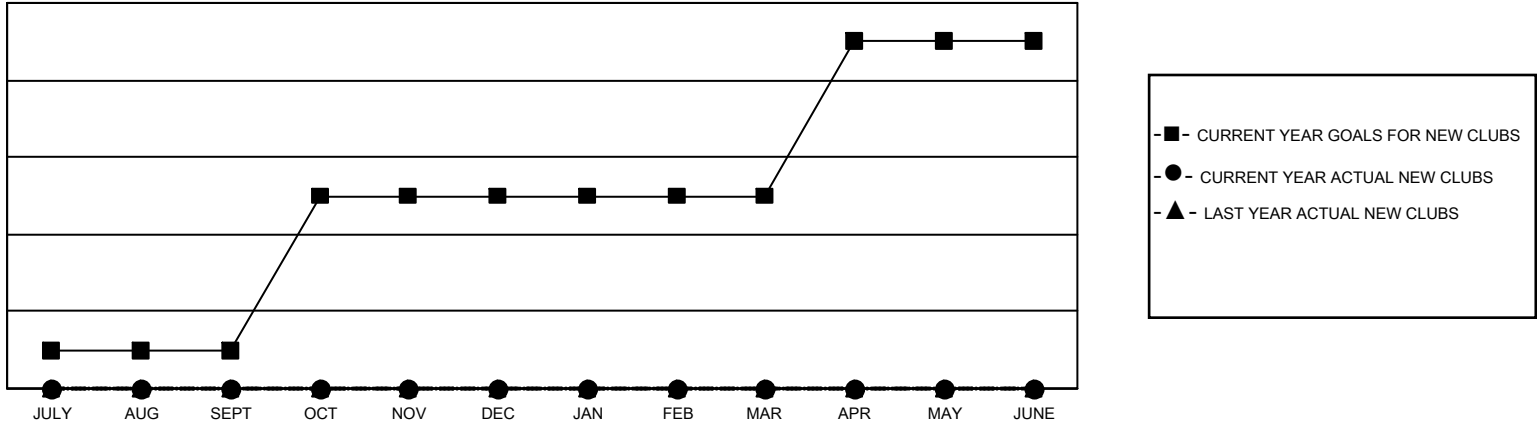
LOCATION: MICHIGAN

GMT: OPEN

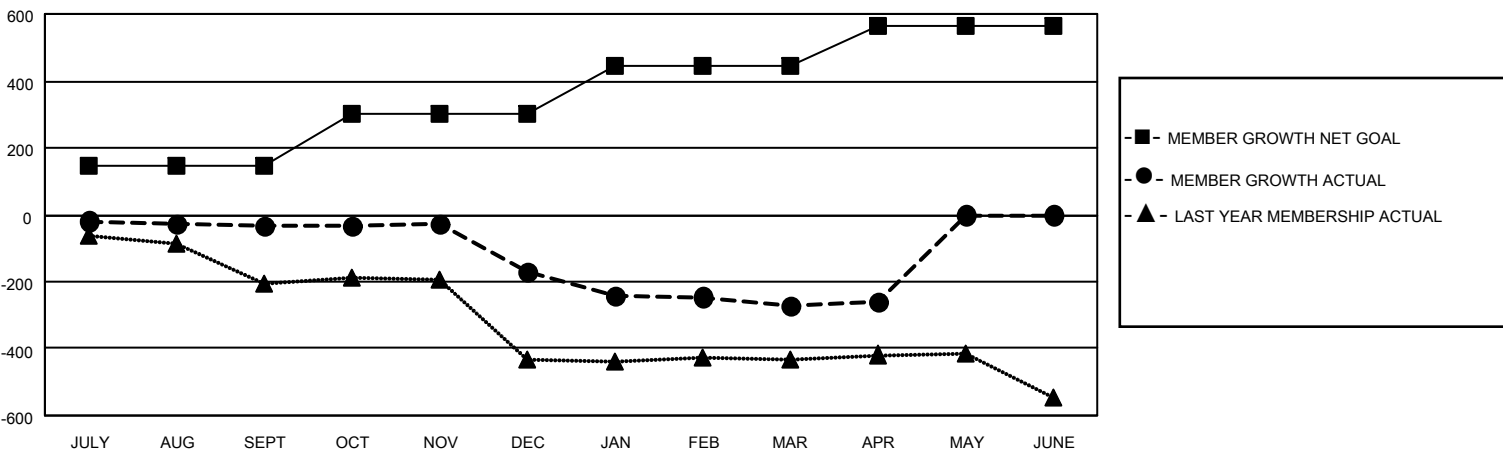
GMT CA 1

Clubs				Members			
RESULTS FOR 2024-2025				RESULTS FOR 2024-2025			
QUARTER	NEW CLUB GOAL	NEW CLUBS	DROPPED CLUBS	QUARTER	MEMBER GROWTH NET GOAL	MEMBER GROWTH ACTUAL	DROPPED MEMBERS ACTUAL (including transfers)
JULY/AUG/SEPT	1	0	1	JULY/AUG/SEPT	144	185	202
OCT/NOV/DEC	4	0	2	OCT/NOV/DEC	156	208	310
JAN/FEB/MAR	0	0	3	JAN/FEB/MAR	143	205	245
APR/MAY/JUNE	4	0	0	APR/MAY/JUNE	119	72	54

GOALS AND ACTUAL NEW CLUBS CUMULATIVE



GOALS AND ACTUAL MEMBERS CUMULATIVE



DROPPED CLUBS: 6		169 CLUBS OF 334 ADDED 1 OR MORE NEW MEMBERS	<u>GENDER DISTRIBUTION</u>	
			MALE	5,436 (63.66%)
			FEMALE	3,103 (36.34%)
<u>DROPPED MEMBERS</u>		CLICK HERE FOR CUMULATIVE MEMBERSHIP DATA		
DECEASED	149		TOTAL FAMILY UNIT MEMBERS 0	
CLUB CANCELLED	23			
OTHER	633		FAMILY MEMBERS PAYING HALF DUES 0	
TOTAL	805			